

CHEMSEAL FGLS

FIBER GLASS LINING SYSTEM

DESCRIPTION:

Chemseal FGLS for high performance joints and openings around ducts, chimneys, protrusion and other inserts. Used through the metal roofing of steel structure and concrete roof where combination of metal and concrete need to be sealed and it could accommodate moderate movement.

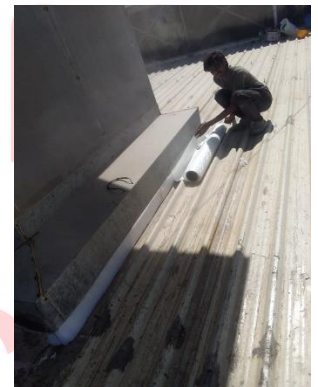
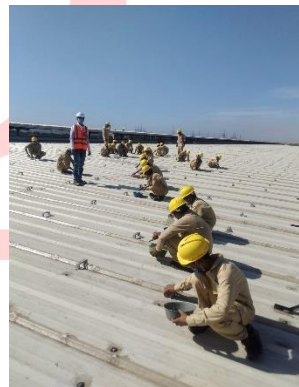
These joints typically occur in metal roof cladding or R.C.C. Roof Slabs for air handling units, AC ducting, and Chimney crossings and other pipe crossings for process and utilities.

The cracks & joints subject to movement in concrete may be covered as lining and it could accommodate mild movement.

- High degree of elasticity to accommodate pronounced cyclic movement.
- It could cater for subsidence and seismic movement.
- Withstands high water pressure.
- Available in clear, white, grey and brown colors, it can be painted with epoxy paints.
- It could ideally seal the overlaps of metal sheets, Gutter, side drains, waterspouts etc.
- Site jointing and sealing system according to prevailing width and gap.
- Ultra-violet resistant, suitable for exposed applications.
- In case of accidental damage one can repair the damaged area only.



The profiles for expansion and construction joints may be innovated as per site conditions while working at site as per suspected movement at specific location.



ADVANTAGES:

Chemseal FGLS is resistant to aggressive chemicals and liquids. This makes them ideal for wastewater treatment plants, swimming pools, cooling towers and construction, where there is a risk of corrosion.



CHEMSEAL FGLS

FIBER GLASS LINING SYSTEM

POLYESTER RESIN- ISO GRADE:

| | |
|----------------|------------------|
| Form | Liquid |
| Packaging Type | Bottle |
| Types | Isophthalic |
| Grade Standard | Industrial Grade |
| Packaging Size | 1kg, 5kg, 10kg |

Polyester resin is the most common type of resin in the marine and automobile industry. It's perfect for low-cost repairs and new construction parts.



Polyester resin is great on vertical surfaces and also works great for fast glass wet out because of its low viscosity. This resin shall be accelerated with Cobalt additive and catalyzed with MEKP (Methyl Ethyl Ketone Peroxide) to properly cure.

Polyester resin is great for a wide variety of applications including, hand layup by brush or roller, spray on applications, marine, transportation, auto body, aerospace, general purpose laminating, profiling into chemical plants drains, basins, roof drains line of metal & concrete, FRP parts and more. This resin is compatible with all types of fiberglass and core materials. Because this resin contains a styrene monomer but it is not compatible with polystyrene foam.

Kit contains: 1kg polyester resin, 50ml accelerator, 50 ml catalyst. A step by step guide is also included.

MEKP CATALYST:

| | |
|----------------|------------|
| Packaging Size | 100ml |
| Packaging Type | Bottle |
| Color | Clear |
| Physical State | Liquid |
| Usage | Industrial |



CHEMSEAL FGLS

FIBER GLASS LINING SYSTEM

FIBERGLASS MAT:

Fiberglass Chopped Mat is perfect for any size job, large or small. The fiberglass mat is a versatile repair material for use on automobiles, boats, tubs, showers, sinks, pools, hot tubs channels, drains, tanks, gutters, and more. It works on a variety of surfaces, including metal, fiberglass, concrete and wood. Mat can be cut with scissors for as per required size & dimension for lining, casting & uniform repairs.

Fiberglass mat provides structural reinforcement for stronger repairs and can be used with Polyester resin or epoxy resin. The product repairs holes, cracks and gaps. When used with polyester resin, repairs are 100% waterproof, making the products ideal for tub, shower, sink, pool, hot tub, boat repair and more. It is easy to work.

This product can also be used on additional surfaces such as wood, concrete and metal to provide extremely strong, durable and waterproof surfaces. Reinforced Repair Areas
When properly used with resin, Fiberglass mat reinforces repair areas and allows for repainting so that the repair looks like the original surface once the job is complete.



Benefits of Fiberglass Cloth Fiberglass mat is a non woven fabric that helps reinforce repairs with its high strength to weight ratio. Use this fiberglass mat where resin alone would not provide sufficient strength. Fiberglass cloth offers numerous benefits, including a resistance to expansion or contraction as temperatures change. Fiberglass mat will not absorb moisture and is non-flammable. The fiberglass is also resistant to most chemicals

Roll Size: Available in various sizes, and Weight.

Size:

0.6m X 5.0 m, 1.0 m X 10 m & more

Wight:

250 grams/Sq.m, 300 grams/Sq.m,
450grams/ Sq.m