

CHEMSEAL 30

INTEGRAL CRYSTALLINE WATER PROOFING ADMIXTURE FOR CONCRETE & MORTAR

DESCRIPTION:

CHEMSEAL 30 is a waterproofing concrete admixture that reacts with moisture into the concrete and forms crystal fiber into the pores and capillary gaps of concrete to provide permanent water impermeability, resists the florescence, and saltation in highly saline soils hence it is ideal the marine environment.

FIELDS OF APPLICATION:

- Foundations, basements.
- Tunnels, dams.
- Precast concrete elements.
- Potable water tanks and waste water tanks.
- Water treatment plant.
- Swimming pools.
- Elevator pits.
- Industrial Floors Where Epoxy Coating To Be Done
- Garage Floors
- Housing Projects in Water Logged Areas

FEATURES AND BENEFITS:

- Protects the concrete against negative and positive water Pressure (14 bars).
- Resistant to extreme hydrostatic pressure.
- Provides permanently active waterproofing. During the curing time, it creates insoluble nano structural crystal into the capillary cracks.
- Nontoxic. Safely used in water tanks.
- Water vapor permeable. It allows the building to breath.
- Easy to prepare and apply.
- Suitable for bored piled raft insulation.
- Cover the cracks up to 0.4 mm.
- Provides long term protection even though concrete surface is damaged.

- Does not need to any additional waterproofing applications.
- Does not harm for human health and environment.

CONSUMPTION:

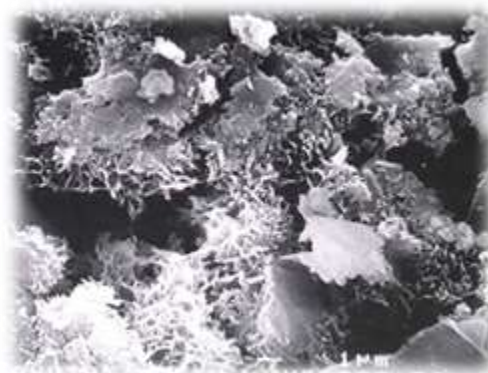
CHEMSEAL 30 is added 0.75% to - 1.5% by weight of cement.

PACKAGING:

20 kg Bag

TECHNICAL INFORMATION

Content	Active chemicals special cement
Color	Grey
Appearance	Powder
Mixing	With Concrete
Application Temp	+5°C to +35°C
HS Code	3824.40.00.00.00



CHEMSEAL 30

INTEGRAL CRYSTALLINE WATER PROOFING ADMIXTURE FOR CONCRETE & MORTAR

SHELF LIFE:

12 months in original, unopened package.

STORAGE:

Store in dry area between +5°C and +45°C. Protect from heat, freezing and direct sunlight.

CAUTIONS / LIMITATIONS:

- Water/Cement ratio should be $\leq 0,55$.
- It may be harmful with skin contact.
- Do not apply in freezing conditions or during precipitation.
- Protect applied materials from rain, freezing, foot traffic and continuous high humidity until completely dry.
- Do not use when air and surface temperatures are below +5°C and above +35°C.



The information and recommendations above are given in good faith based on our current knowledge and experience of the products when properly stored, handled and applied in accordance with current best practice, national standards and our recommendations. As we have no control over site conditions or methods of application, no liability can be derived from the contents of this information sheet, or from any written recommendations, or from any other advice offered. The user of the product is solely responsible for the product's suitability for the intended application and is recommended to test the suitability prior to use. We reserve the right to change the properties of our products without notice. All orders are sold subject to our current terms of sale and delivery. With the publication of this Technical Information Sheet all previous editions are no longer valid.